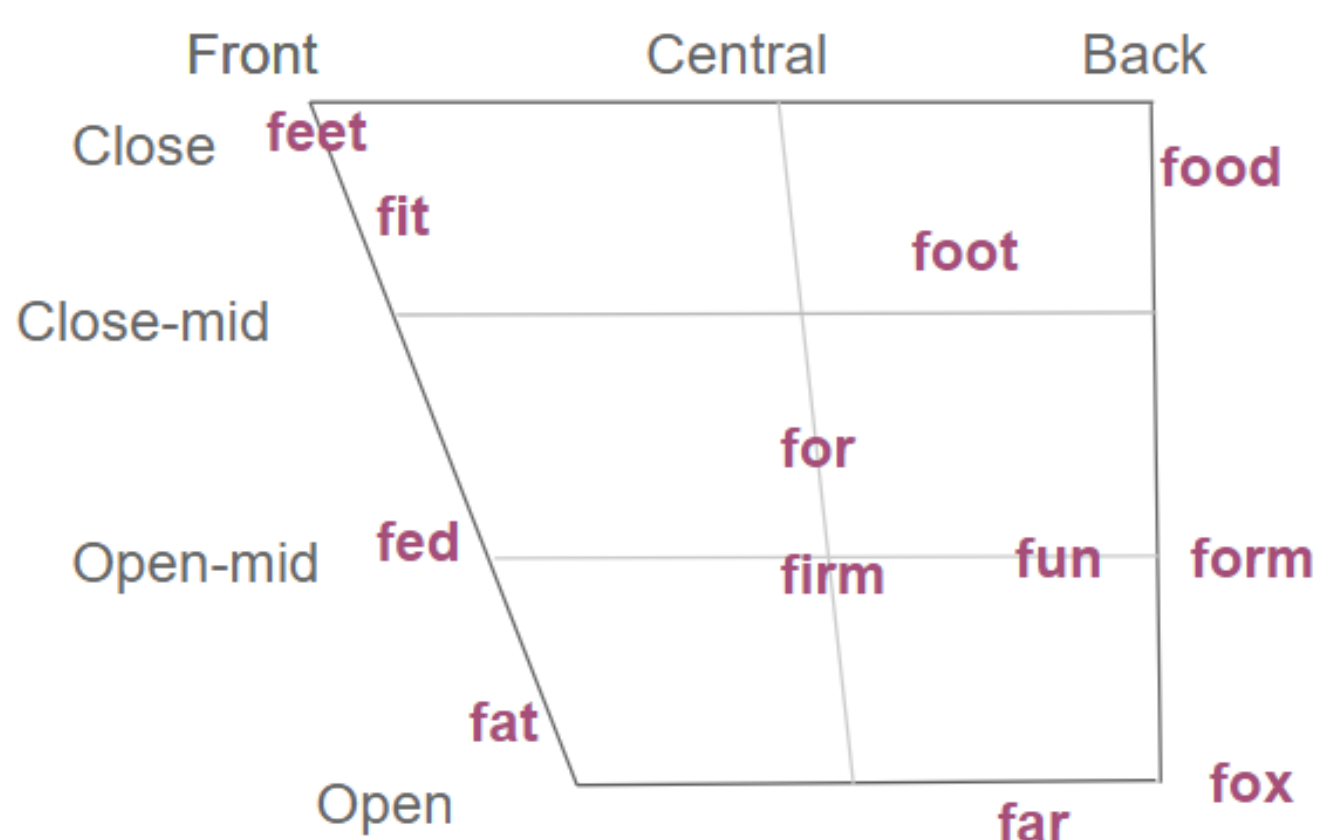
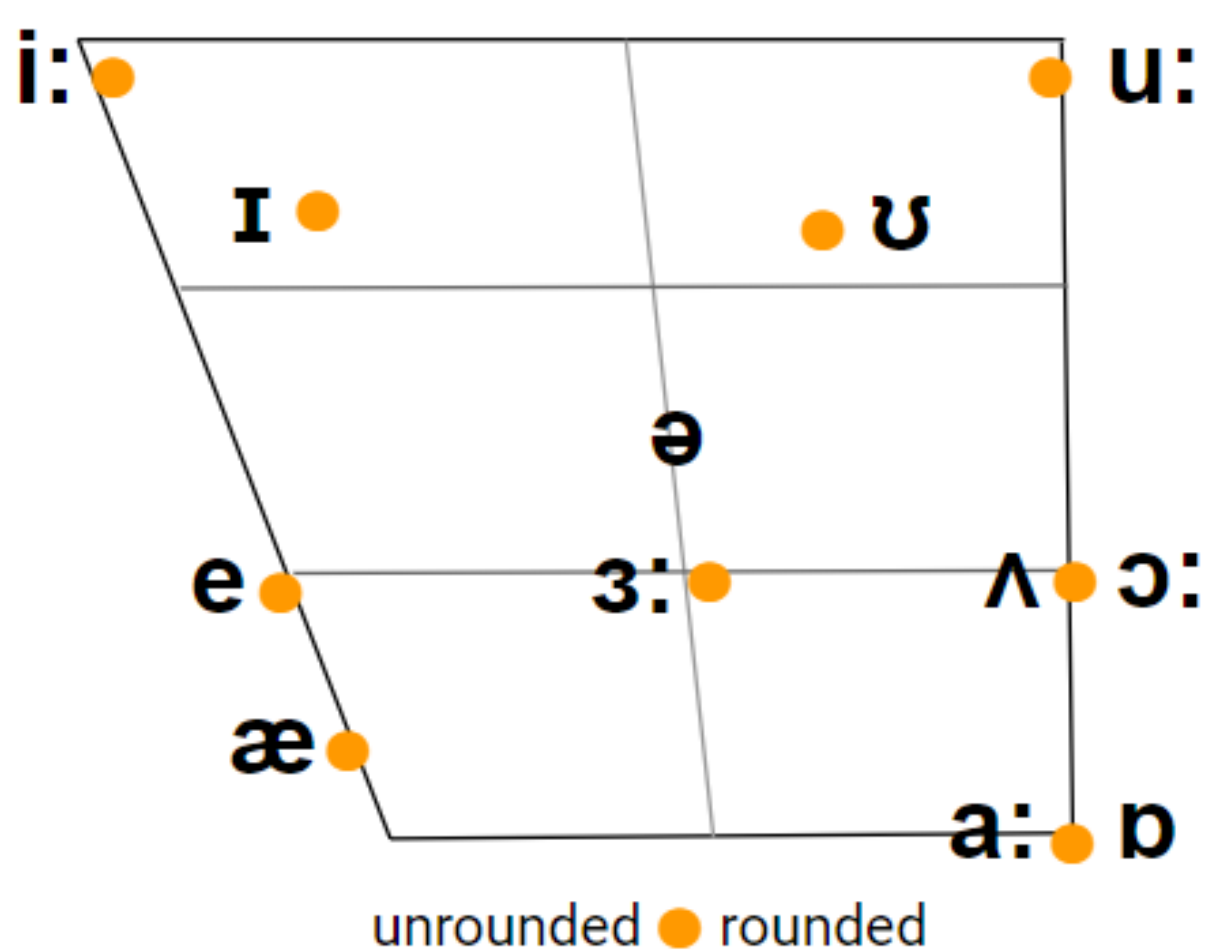


English Pronunciation

The British English sound system consists of 44 sounds: 20 vowel sounds (split into two groups of: 12 monophthongs & 8 diphthongs) and 24 consonant sounds.

The Vowel Chart



There are 5 long vowel sounds. You can recognise them by the symbol: Officially this is called a diacritic but it looks like a colon. There are 7 short vowel sounds.

These short words can help you remember the various vowel sounds!

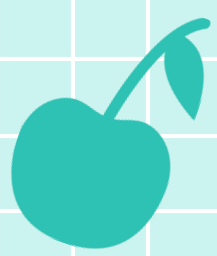
The Phonemic Chart

i:	ɪ	ʊ	u:	ɪə	eɪ		
e	ə	ɜ:	ɔ:	ʊə	ɔɪ	əʊ	
æ	ʌ	ɑ:	ɒ	eə	aɪ	aʊ	
p	b	t	d	tʃ	dʒ	k	g
f	v	θ	ð	s	z	ʃ	ʒ
m	n	ŋ	h	l	r	w	j

LEARN THE DIPHTHONGS

/əʊ/ /aɪ/ /eɪ/ /ɪə/ /aʊ/ /ɔɪ/
'No highway here cowboys!
/eə/ /ʊə/
There're tourists!

Consonants
Row 1: plosives with 2 affricates (tʃ & dʒ)
Row 2: fricatives
Row 3: 3 nasals (n, m, ŋ), fricative h, a mix of (l, r, w & j)



Consonant Sounds

PLOSIVES

/p/ - pen 

/b/ - baby 

/t/ - table 

/d/ - dog 

/k/ - cake 

/g/ - girl 

FRICATIVES

/f/ - family 

/v/ - vase 

/θ/ - think 

/ð/ - mother 

/s/ - snow 

/z/ - zebra 

/ʃ/ - shell 

/ʒ/ - television 

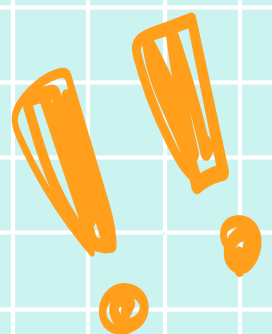
/h/ - hair 

NASALS

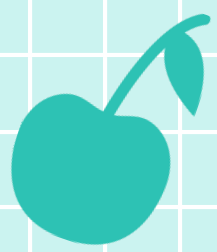
/m/ - money 

/n/ - nine 

/ŋ/ - sing 



Sounds in green are voiceless (= unvoiced).
Sounds in blue are voiced.



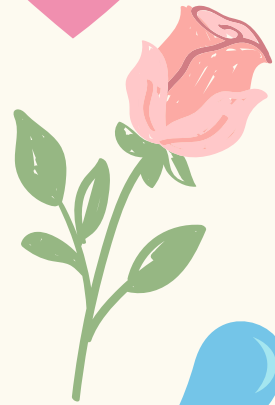
Consonant Sounds

APPROXIMANTS

/l/ - love



/r/ - rose



/w/ - water



/j/ - yellow



AFFRICATES

/tʃ/ - church



/dʒ/ - judge



Did you know ...?

! /l/ is a lateral.

! /l/ & /r/ are glides

! /j/ & /w/ are semi-vowels

Diphthongs

Tip: Label this boy with the words below!



/ɪə/ - ear



/eə/ - hair



/eɪ/ - face



/aɪ/ - eye



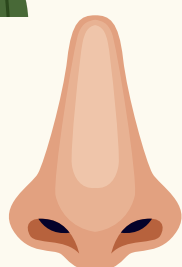
/ɔɪ/ - boy



/aʊ/ - mouth

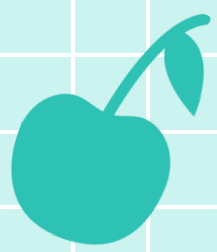


/əʊ/ - nose



/ʊə/ - Europe





Monophthongs

SHORT VOWELS

/ʌ/ - up 

/æ/ - apple 

/e/ - bed 

/ɪ/ - ship 

/ɒ/ - clock 

/ʊ/ - foot 

LONG VOWELS

/ɑː/ - car 

/iː/ - tree 

/ɔː/ - door 

/uː/ - food 

/ɜː/ - work 

CENTRAL VOWEL SOUND - The 'schwa'

/ə/ - banana



Only in unstressed syllables!

REMEMBER!

Monophthongs are single vowel sounds. They can be long or short. Diphthongs are double vowel sounds. They are always considered to be one long sound. All vowel sounds are voiced.